



# Waiatarua Community News

850 copies

Christmas issue—December 2021



## From the President

Hello

Many changes in the last month as efforts strengthen to get everyone vaccinated. We should be close to the 90% target so that we can begin the road trip through the traffic lights. A bit like studying again for your driving test except more confusing and serious as we look to keeping our whānau and our tamariki safe and able to enjoy the pleasures of the summer holidays.

I have decided to stand down from the Executive Committee at the end of this year so this will be my final piece as President. I will be focusing my energies on Neuro Connection Foundation. This is a Charitable Foundation based in Tui Glen, Henderson that provides rehabilitation services that is aimed at **empowering people with neurological conditions to lead more independent lives**. This is a badly needed service for West Auckland residents who know of family, friends, workmates etc who suffer from any type of mobility issue as a result of a stroke or other neurological disease. If this is the case and you do know someone then please contact me at [chair@neuroconnection.org.nz](mailto:chair@neuroconnection.org.nz).

This of course means that the Executive Committee needs a new President. This is an elected position so anyone interested should contact the Secretary on [secretary@waiatarua.org.nz](mailto:secretary@waiatarua.org.nz). If you need some guidance on what is required then please call me on 027 585 1486 to discuss. As we come close to the end of the year there are a couple of achievements that I am looking forward to seeing implemented successfully in the New Year.

The first one is our success obtaining funding for the wasp weekend. With Rita Steel leading this she has recruited a strong group of volunteers to firstly learn the ropes and then head out to residents' properties and put their new skills to work solving your wasp issues.

The second is the new structure that has been agreed by the joint RRA groups across West Auckland to add focus to achieving solutions to local priorities that involve more than one RRA. There is too much detail to explain in this piece so there will be a separate piece in this newsletter giving you some details about the new structure. Whilst I will also step down from this group as well, I will stay on as lead of the Public Parks group for at least the first quarter next year to ensure it is set up and we have the right people on the subcommittee to make a difference. More on this later.

Christmas is nearly upon us so as this is the final newsletter of the year I just want to wish you all a safe and enjoyable Christmas. This has been a tough year for us all. We have dealt with the continued effects of Covid-19 and also that scary storm a couple of months ago which has seriously affected a lot of properties in the area. My best wishes go out to those that have been dealing with the aftermath and I trust as usual that you will come out even better and stronger on the other side.

A Merry Christmas to all.

Tom Hoey



## WRRRA President Role

### Purpose

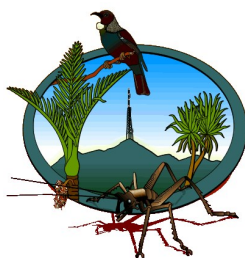
For the President to manage and lead the Executive Committee so that they achieve the Association's goals and fulfil the Association's mission. Current president is Tom Hoey who will not be standing for election again in 2022.

### Principal Duties and Responsibilities

The President of the Association shall be the Chairman of any Executive or Annual General meetings at which they are present

At every meeting the Chairman shall have a deliberative and casting vote on all issues proposed for approval at that meeting.

Should the President not be available as above then they will appoint the Vice President to preside and failing that they will appoint



a member of the Executive Committee who will be attending to preside

They will be required to attend meetings with Executive Committee members outside of the monthly meetings, in particular those undertaking specific roles like the treasurer or those chairing sub committees.

They will be required to meet with members from time to time.

They will be required to attend meetings with local Government representatives, council and neighbouring committees.

They will be required to represent the association at local and other related events in order to promote and enhance the activities of the association.

The role requires a time commitment of approximately 150 hours per year. A more detailed description of the role can be found on the WRRRA website [www.waiatarua.org.nz](http://www.waiatarua.org.nz)

*Opinions expressed in this newsletter are not necessarily those of the editor or the Waiatarua Ratepayers and Residents Association*

Contact  
Us

**Editor:** Erin Kingsleigh-Smith Phone: 021 355 009 Email: [editor@waiatarua.org.nz](mailto:editor@waiatarua.org.nz)

**WRRRA President:** Thomas Hoey Phone: 027 585 1486 Email: [president@waiatarua.org.nz](mailto:president@waiatarua.org.nz)

**Community Hall and Library:** 911 West Coast Road. Phone: 814 9353

**Hall hire bookings:** Matt Smith Phone: 021 059 3467 Email: [hallhire@waiatarua.org.nz](mailto:hallhire@waiatarua.org.nz)

**Library hours:** Thursday 10.00am–12.00pm

Friday 7.00pm–8.00pm

Saturday and Sunday 11.00am–12.00pm

**website:** [www.waiatarua.org.nz](http://www.waiatarua.org.nz)

# Terms of Reference for Waitakere Ranges Combined R&R Group's Sub-Groups

## Purpose of the Waitakere Ranges Combined R&R Group (Oversight Group)

The purpose of this group is to have a forum in which issues and ideas of common interest to the communities of the Waitakere Ranges Heritage Area can be shared and discussed and to receive information - and to carry out the activities below.

## Purpose of the Waitakere Ranges Combined R&R Group's Sub-groups

The purpose of these Sub-Groups is to progress work specific to the main issues identified by the Oversight Group and report back to the Oversight Group on progress.

## Representation

Each Sub-Group will be led by an individual nominated by the Oversight Group. They may or may not be the formal rep for their community on the Oversight Group. This person is delegated by the Oversight Group to represent the entire Waitakere Ranges community with regard to their sub-group issue.

Each Residents and Ratepayers group in the Waitakere Ranges Heritage Area may nominate as many representatives as they wish to attend any or all of the Sub-Groups. Other groups operating within the Heritage Area may also send reps to attend Sub-Groups (eg Pest Free Alliance, WRPS, Forest & Bird etc).

There is no limit on how many Sub-Groups any one individual may attend. Some reps may only attend a specific Sub-Group when their community has a pertinent issue & not at other times.

The Sub-Groups may invite specific elected reps &/or Council staff to attend any or some of their meetings as appropriate, or seek

advice & support from them in any other way.

The Sub-Groups Leads will be responsible for managing the membership of their own groups.

## Meetings

The Sub-Group Leads will make arrangements for their group to meet once every 2 months, or more frequently if that group agrees to do so.

## Prioritisation of work

Each Sub-Group will decide the priority of the work & issues within their main issue topic area and the speed with which each issue is tackled.

Task-Groups may be formed to tackle individual issues (maybe of only 1 or 2 people from a Sub-Group) if that is felt to be the most effective way of working by the Sub-Group.

## Reporting

Each Sub-Group will report on progress to every meeting of the Oversight Group (3 monthly).

Each Sub-Group Lead will be responsible for recording the main points of meetings (bullet points are fine). A secretarial role may be appointed within each Sub-Group.

## Review

The Oversight Group will review the reports from each Sub-Group when it meets (3 monthly). This may result in refocusing or change in direction if that is felt appropriate by a consensus of the community reps present.

The strategic priorities may be reviewed every 6 months by the Oversight Group to ensure they are still relevant and assign new Sub-Groups if necessary.

## Advance Notice of WRRRA Annual General Meeting

Waiaatarua Hall at 7.00pm, Tuesday  
22 February 2022

All residents and ratepayers are invited to attend. You can join and pay your membership fee on the night.

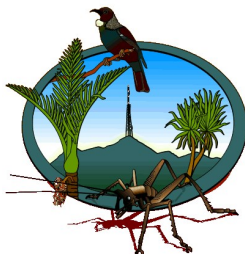
To vote you need to be a member for more than 21 days prior to the meeting.

Members have 1 vote per household.

Nomination forms for election are available now from the President. Contact as below.

Completed nomination forms need to be with the Secretary or President no later than 7pm on Friday 18 February 2022.

For further information please email the Secretary on [secretary@waiaatarua.org.nz](mailto:secretary@waiaatarua.org.nz)



## Library News

We are open at last for you all to choose your Christmas reading, and for the holidays.

Because of Covid 19 there are a few rules:-

Please wear a mask in the library.

Keep the 2m distance.

Scan using the Covid Tracer app. or use the sign-in slips provided. Put slip in the box provided for privacy. These will be collected and put in envelopes and kept secure for 60 days.

All our volunteers will be wearing masks as well, and will keep their distance from you too.

We will look forward to seeing you soon, and our best wishes for Christmas and New Year 2022.

Barbara Field

Happy Holiday  
Reading!



Promotion Matters is proud to sponsor the printing of the Waiaatarua Community News

- DIGITAL PRINT - BANNERS  
- LARGE FORMAT PRINTING

Promotion  
MATTERS

- APPAREL - PENS - CAPS  
- PROMOTIONAL PRODUCTS

42 Napuka Road, Henderson Valley

Phone 09 835 4577

Email [info@promomatters.co.nz](mailto:info@promomatters.co.nz)

[www.promomatters.co.nz](http://www.promomatters.co.nz)

## Community Event Update

All our local events to be held in the Waiatarua hall between now and February 2022 have unfortunately been postponed until further notice including the Volunteers lunch, due to ongoing uncertainty around Covid restrictions.

The monthly community dinner held at Elevation Brasserie will also hopefully recommence in 2022. Watch this space for more information.

## Waiatarua Community Patrol News

Great news! With the change to Alert Level 3 Step 2 we have now been given the all clear to resume patrolling as of Monday 15 November.

Our volunteer team are really looking forward to getting back on the road and out in our community, while adhering to Covid safety protocols.

Please give our patrollers a wave if you see them and we thank each and every one of them for their service to the community.

There appears to be an increase in reports (over social media) of parcel and mail thefts in the area, as well as potentially suspicious behaviour by unknown 'visitors' and unfortunately there was a ram raid at Kenlock Motors in Oratia recently. Having our team back out there providing extra eyes and ears for the Police couldn't come at a better time.

Stay safe...check on your neighbours and we hope you are enjoying this summery weather.

Contact Sue Dell, Patrol Co-ordinator /Chairman (waiatarua@cpnz.org.nz / 021 681 207) for more information.

### Police Contacts – a reminder:

111 – Emergency

105 - non-emergency (incident already happened & don't need urgent assistance). Or online 105.police.govt.nz

Crimestoppers 0800 555 111 – Report crime anonymously, or online crimestoppers-nz.org/report

\*555 (from mobile phone) – urgent but not life-threatening driving incidents

Sue Dell



## From the Editor

Hello everyone

Here we are again at the end of another year, with Christmas virtually upon us. The newsletter takes its annual break in January, with the first one for 2022 being the February issue. With this being the last one for the year it is timely for me to thank all those wonderful people who help to get this publication out. These include the WRRRA President, Tom Hoey, the WRRRA Executive Committee, Tony Bacon, Carol Hinton and the dedicated team of volunteers who distribute and deliver the newsletter. I am also grateful to all the regular newsletter contributors who provide copy for me and of course all our advertisers. Thanks must also go to our printer, Ben Deakin at Promotion Matters, for his support of our publication. And to you, the readers.

Who knows what Christmas is going to be like this year. I expect it may be very different to what we are all used to. I guess the most important thing is to be grateful for what we do have and to enjoy it as much as we can with our families and friends.

Merry Christmas and good wishes to all.

Cheers, Erin



### FEBRUARY NEWSLETTER DEADLINE

Copy needs to be with the Editor

by 5pm on FRIDAY 21 JANUARY

## Advertising & Community Notices

Commercial advertisements are welcome and can be arranged by contacting Erin Kingsleigh-Smith, editor@waiatarua.org.nz, ph 021 355 009. Community Notices are free to current financial members.

**Doers Networks:** local, fast internet providers info@doers.net.nz

**Handyman Out West:** Any work undertaken. House and property maintenance, renovation and decoration eg gutter cleaning, water blasting, deck building, tree felling, painting etc. Reliable and friendly. Ph Mike 814 9708

**Indoor Bowls:** every Thursday at the Hall 7pm for 7.15pm start. No experience needed. Coffee and tea provided. \$3 donation to CPNZ. Ph Cecilia: 814 9660

**Lawn mowing, ride on work only:** Ph Grant at Top Grass Ltd. 814 9493 mob 021 024 75610

**Oratia Community Church:** On the corner of Parker & West Coast Rds. Fellowship meets on the 2nd Thursday of each month at 1pm in the church hall. Ph 813 9869 for information.

**Plants, crafts etc:** Various plants, shrubs and bromeliads. Assorted crafts, scarves, net fruit bags \$2, occasional cards, knitting, sewing, second hand books. All proceeds to Nepalese Educ Trust for Tertiary Scholarships. Phone Margaret 814 9859.

**Table Tennis:** every Wednesday in the Hall, 7-9pm. No experience needed, all equipment supplied. \$2 per week Contact Tony 814 9860, email tony.bacon @sthw.co.nz

**Tiler / Stone layer:** 21 years experience in the trade available for indoor and outdoor projects large or small. Phone Craig Starr 021 610 408.

**Waiatarua Playcentre:** Come and have 3 free visits at our bush-nestled Playcentre. We are child led, parent run and full of fun! Open 9:30am - 12:30pm Mon and Weds. Contact Ronni O'Brien 09 814 8835 or waiatarua@playcentre.org.nz or www.facebook.com/waiataruaplaycentre

**We are Loud:** modern music lessons —vocals, piano, guitar, bass, drums & songwriting. Group & private lessons for all ages and levels. Visit www.weareloud.co.nz or contact jo@weareloud.co.nz 0274 707 042.

**Work To Do:** Sort out that 'To Do' list for your House, Garden or Property. Clean Ups, Maintenance, Simple Repairs, Tree Trims, Window Cleans, Painting etc. Local and Reliable. Call Chris 027 600 3977.

**Yovi's Topstitch:** Alterations or sewing projects I can do at your budget, from cushions, squabs etc. Contact Yovi 021 084 36450 or yovistopstitch12@gmail.com



## Friday Night is Locals Night (after 5pm)

25% discount on our handmade pizzas,  
and a reduced price on beers and wines

Bring your WRRR card for our  
WRRR Menu & additional discounts

473 Scenic Drive, Waiaatarua 098148727  
www.elevationbrasserie.co.nz

**SLOPE STABILITY | RETAINING WALLS  
NEW BUILDS**

Ben 022 1558 308  
ben@hdgeo.co.nz

**DAVIES Creative BUILDERS**

www.dcbuilders.co.nz

Renovations | Extensions | Bathrooms | Outdoor Areas | etc.

09 8149 555

dc\_builders@hotmail.com

**Too much to do?**

**Hire a virtual assistant!**

The Crawford Connection  
Connecting the dots for your business

Adhoc and service plans -  
to suit your business.

Also on:

Contact Bianca on:  
M: 021 998 292  
E: bianca@thecrawfordconnection.co.nz  
www.thecrawfordconnection.co.nz

**Feline Fanatics**  
In-home Pet Care

Cat sitting services provided to you  
by a qualified, professional, self  
confessed cat lover.

Phone: 0210 2892129  
Web: www.felinefanatics.co.nz

The royal treatment for your  
feline friend.

# EARTHWORKS

Digger excavation, Dirt removal,  
Under-basement digging,  
Leaky basement, Big diggers,  
Small diggers, Bob cats, Retaining walls

## EXCAVATING SERVICES.CO.NZ

Call Aaron. 021973171  
After hours: 09 600 1752  
aaron@excavating-services.co.nz  
www.excavating-services.co.nz

**ORATIA PLUMBING** LIMITED

Registered Master Plumber

Maintenance plumbing, hot water cylinders,  
additions & new construction

**EXPERIENCED  
CRAFTSMAN PLUMBER**

PHONE BRIAN 0274 732 217 OR 814 9957 a/hrs

## Natural Kitchens

We customise our products to suit your taste and needs  
Our design styles range from modern European styles to traditional  
We use only top quality German hardware and fittings  
We specialise in creating timeless quality kitchens from natural materials

*They look good, feel good and last longer.*

www.naturalkitchens.co.nz

Call us on 817-2740 for enquiries  
or to see us at our showroom in Laingholm

**LEAF IT TO US**  
GARDENERS

Sections Tidy-ups | Hedge Trimming  
Planting & Plant Care | Green Waste Removal  
Water Blasting | Regular Maintenance  
& More

027 8000 313 www.leafit2us.co.nz

**ADVERTISING**

Your advertisement could appear here, or on  
the other side of this pull-out page! It would  
only cost you from \$30 per insertion to reach  
over 2,000 people in Waiaatarua.

*That's got to be a bargain!*

Contact the Editor on  
editor@waiaatarua.org.nz for more information  
and pricing. We offer various sizes at very  
reasonable rates!

## WAIRUA DAY SPA

**LOCALS SAVE 10%  
on treatments**

Waitakere Resort & Spa, 573 Scenic Drive, Waiaatarua  
waitakereresort.co.nz 09 814 9622

Real Estate is about Strategy..

Give Michael & Andy a call..  
and let them focus on **your**  
next move!

Michael Thompson | Andy Roche  
027 763 9663 | 022 000 9392

Universal Realty Ltd Licensees (REAA 2008)

- Expert negotiator
- Lives local
- Love exceeding expectations

**Christine Casey**  
Residential Sales  
M 021 888 946  
E c.casey@barfoot.co.nz  
barfoot.co.nz

**BARFOOT THOMPSON**  
LICENSED REALTOR

# PROLINE

PLUMBING & GAS

Honest advice, honest price,  
quality work. Professional  
plumbers you can trust.

**0800 10 20 11**

## Treacherous intersection strikes again

On Saturday 6 November another accident occurred at the intersection of Scenic Drive and Piha Road with a collision between a car and a motorcycle. Several police cars, two fire engines and an ambulance attended. Both Scenic Drive and Piha Roads were closed while the badly injured motorcyclist was prepared so he could be safely lifted into the ambulance. It is notable that not one of the vertical markers installed to try and clarify the lanes for drivers remain in place. These have been progressively removed by drivers, confused by the road layout, driving over them as they change into the correct lanes. When in place they made it even more difficult to exit Quinns Rd safely but they possibly did provide some clarity for traffic leaving Piha Road onto Scenic Drive and vice versa. Interestingly when I was negotiating the layout of the adjacent car park in front of Elevation, with Waitakere City nearly 20 years ago I was advised by city officials they were, back then, considering a roundabout to resolve this dangerous road layout. I am advised that ACC now has no plans in the foreseeable future.

The first road through Waitatua, then called Nihotupu, was nothing more than a bullock track. The remains of this are still visible crossing over what is now I Quinns Rd. This became a section of a road from Glen Eden through Oratia and Waitatua and out to Piha. During the Great Depression of the 1930s, Scenic Drive was formed as a tourist route from Titirangi to Swanson. This was constructed to provide work for the unemployed with only pick, shovel and a little explosive so the layout was very rudimentary. Where it intersected the Glen Eden to Piha road the

present intersection in Waitatua was formed. While this was adequate for the slow, (some still horse drawn) small low volume traffic of that time it is totally unsuitable for today's high volume of much larger and faster vehicles. Apart from tar seal nothing structural has been done to improve the road layout for 90 years! It remains impossible for today's longer wheel base traffic to even turn from the Piha Road onto the Scenic Drive heading towards Swanson. When traffic volumes are high, especially in weekends, it is a hazardous endeavour to just exit or enter Quinns Road. (Especially from the Piha Rd into Quinns Rd.) Traffic volumes are increasing and this summer promises more driver frustration, road rage and accidents. No amount of road markers, white arrows, yellow lines and blinking lights are going to make this intersection safe.



Wayne Edwards

## Environmental Corner

This summer the R&R can help with pests in a couple of ways:

- We have traps for you to borrow! Please reach out if you have rats, possums or stoats.
- We are conducting a mass bait of wasps in the early autumn. If you tend to have an influx of German wasps (yellow jackets) then it's worth signing up.

Both are free to Waitatua R&R members and it's only \$20 to sign up to be a member.

Enjoy the summer.

Rita Steel



## Punny Christmas Jokes

What reindeer game do reindeer play at sleepovers? Truth or deer.

What is Santa's dog's name? Santa Paws!

What's the absolute best Christmas present? A broken drum—you can't beat it!

What happens if you eat Christmas decorations? You get tinsel-it is.

If the mountain seems too big today  
then climb a hill instead. If the morning brings  
you sadness it's okay to stay in bed. If the day  
ahead weighs heavy and your plans feel like a  
curse, there's no shame in rearranging; don't make  
yourself feel worse. If a shower stings like needles  
and a bath feels like you'll drown, if you haven't  
washed your hair for days don't throw away your  
crown. A day is not a lifetime, a rest is not defeat.  
Don't think of it as failure, just a quiet, kind retreat.  
It's okay to take a moment from an anxious,  
fractured mind. The world will not stop turning  
while you get realigned. The mountain will still be  
there when you want to try again. You can climb it  
in your own time. Just love yourself til then.

Laura Ding-Edwards

tinybuddha.com



## Plant of the Month

### New Zealand Iris, Mikoikoi

New Zealand iris are eye catching grass-like plants with stiff leaves and delicate white iris-like flowers that appear from late Spring to Autumn. The seed pods are an attractive orange and last through the winter.

Mikoikoi makes a bold statement when mass planted or as a border. It is a good replacement to Agapanthus, growing in clumps from 50cm tall to 1 metre. It is not picky about where it is planted, tolerating full sun to partial shade but it does not like very wet areas.



Although there are about 12 species found in South America, Australia and New Zealand only three are endemic to New Zealand.

*Libertia grandiflora* (left) – the largest of the three, it has flowers that appear above the leaves followed by golden seed pods.

*Libertia ixioides* (above right) – a shyer version plant than the *grandiflora*, hiding its flowers amongst the leaves.

*Libertia peregrinans* (not pictured) – the harsher the conditions the brighter the colour. The leaves shade from golden green to orange but perhaps not so suitable for Waitatua

as it is primarily coastal, although I have planted it and it seems happy enough.

*Cathie Wells*

## Mucking in at Waitatua Playcentre

Auckland's shift down to Level 3 was a fantastic opportunity for local resident Joe Heays, aka Poppa Joe, to get to work on fixing up the Waitatua Playcentre Wendy house. His grandchildren, also local residents Beatrix and Flery, are regular members of the playcentre and have been missing the chance to play there with their friends while Auckland is under Covid-19 lockdown restrictions. The Wendy house is the latest project the Waitatua Playcentre whānau have taken on as they continuously improve the centre's facilities.



"Waitatua Playcentre has been a fantastic hub for us to connect with others in the community. It is a wonderful local resource for our little ones, with fantastic facilities. The centre is small, but is often filled with fun and laughter, and some of the friendships that we have made here as sure to be life-long – both for me, and for the girls." – says their mum, Katherine.

Within Playcentre structure, parents are seen as the first educators of children. This offers families the chance to play, grow and learn together, as well as forge meaningful friendships with other families in the community. Caregivers all have a role in the running of Waitatua Playcentre, both through engaging with tamariki in child-led play and by helping to keep the centre running smoothly. Playcentre also fosters the involvement of whānau in free early childhood education. This helps to equip parents with skills to meaningfully contribute to their child's education on session.

Katherine was so appreciative of the education Playcentre provided her; "During this lockdown I have been so grateful for the early childhood education opportunities that Playcentre has offered me! It has made me so much more confident in myself as a parent and teacher during this very long, extended time away from their usual activities. Having said that, we will all be very pleased to get back there and connect with everyone." Located down the driveway next to the Waitatua Hall, it will be great to get back and make the most of the centre with the warmer weather approaching. It is perfectly positioned within the lush Waitakere bush to take advantage of the sun while providing great shady spots for the hot summer days, and lots of opportunities for the tamariki to explore the surrounding nature.

Waitatua Playcentre would love to see more local families join the centre and welcome visitors to contact us on Facebook or [waitatua@playcentre.org.nz](mailto:waitatua@playcentre.org.nz) to arrange to come in for a play during level 2 and below. Your first three visits are free of charge and the annual fees are very affordable. Waitatua Playcentre is open on Mondays and Wednesdays 9:15am-1:15pm and hopes to reopen on Fridays soon. Playcentre is for the whole whānau and caters to families with children aged 0-6 years.

