

Waiatarua Community News

900 copies

April 2008

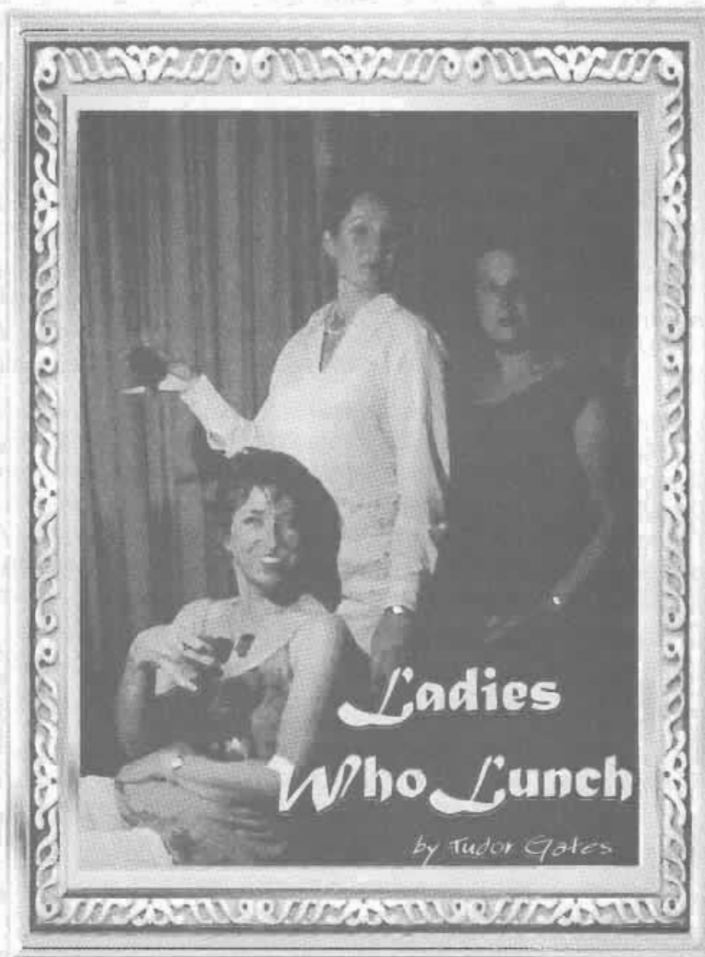
Waiatarua Performing Arts Trust News

It's interesting to look back how far we have come; we now have Production Managers, Promotion, and a queue for lights and sound. At the first production meeting, the 'production' (it's not a play anymore) was planned by date, the budget set and most of the roles filled. Beats volunteering for everything...

As to this production, it's brilliant. With a no nonsense director, professional crew and committed cast backed by a funny yet dramatic script we have a crowd pleaser on our hands. 'Ladies Who Lunch' follows an upper crust group of femmes who decide to meddle where they shouldn't. Or should they? That of course is the question and so the plot thickens. Watch the intrigue unfold as they ultimately bring about a collision of relationships and stereotypes, accompanied along the way by laughter and quick wit.

A comedic drama well worth a night out, come and join us in our latest production 'Ladies Who Lunch'.

Waiatarua Performing Arts Trust presents—



*Their husbands
take them for
granted -
now they are
taking their
husbands for
millions!*

*the comedy -
directed by
Peter Mason*

*tickets
\$20 | \$15.*

30 April—10 May 2008, at 8pm

Waiatarua Community Hall, 911 West Coast Rd, Waiatarua, Waitakere City.
Matinee performance 6.30 Sunday 4 May.

Tickets available from Go West Musicworks
15-18 Catherine St, Henderson, Waitakere City, or

ph 814 9744 or email wpat-tickets@xtra.co.nz

Checkout www.waiatarua.org.nz/PerformingArts.cfm

WAIATARUA RATEPAYERS & RESIDENTS ASSOCIATION

www.waiatarua.org.nz

Opinions expressed in this newsletter are not necessarily those of the Editor or the Waiatarua Ratepayers and Residents Association

Editor

All enquiries to:
Dave Pocock, Ph 814 9697
Email davepocock@xtra.co.nz

WRRRA President

Dave Pocock, Ph 814 9697
Email davepocock@xtra.co.nz

Community Hall and Library

911 West Coast Road
For hall hire enquiries, contact:
Dave Pocock, Ph 814 9697
Email davepocock@xtra.co.nz

Library Hours

Thursday	10 am – 12 pm
Friday	7 pm – 8 pm
Saturday	11 am – 12 pm
Sunday	11 am – 12 pm

Weed Watch

A recommendation from our WRRRA Environmental representative.

Is your ginger plantation too large for you to cope with? Then ring Ryan on 0274 844 152. He has done work for me and several of my neighbours and we have been very pleased with the result. He charges \$30 an hour and is a very fast and efficient worker. He can also kill other environmental weeds if required.

- **Susanne Timms**

Signal Gallery Relocating

The Signal Gallery is moving from Swanson to Kumeu. I close the doors in Swanson on April 6 and hope to reopen on April 15 at 505 State Highway 16, Kumeu. The telephone number will stay the same.

Go to the end of the westbound motorway, turn left and continue travelling north towards Helensville. It is 1 km on the right before Kumeu in a stand-alone shop, past the strawberry gardens on left.

I want to thank so many of you who have supported me here over the last 6 years. I have enjoyed being here and felt very much part of the vibrant Swanson community. I have learnt a heap and made wonderful new friends. Your custom and enthusiasm for the gallery has given me such great encouragement to carry on representing artists of the west.

The new location is only 15 minutes from Swanson and I really hope you will continue to be part of the Signal Gallery's clientele.

Library

Jeanette Ziesler

A Selection of New Books in the Library

Ken Follett – "World without End" – A sequel to the "Pillars of the Earth", but will be enjoyed by all Follet fans. Great!

Joanna Trollope – "Friday Nights" – Six quite different women meet regularly and forge an unexpected bond.

Umrigar Thrity – "The Space Between Us" – Set in India this gives an insight into the lives of an upper class Paris women and her cleaner.

Bryce Courtney – "The Persimmon Tree" – A young man's adventures in the Pacific and Australia during World War 2.

Stephen L Carter – "New England White" – A murder cracks the veneer of racial complications in a university town.

Tony Parsons - "My Favourite Wife" – From the author of Man and Boy, this is set in Shanghai, where a lawyer has moved his family.

If you haven't been to the library recently, come and catch up on these and many more new books.

From the President

Dave Pocock

Hi! Isn't this weather unbelievable, a fantastic Xmas has been followed by an equally fantastic Easter. The W.R.R.A. year has had a patchy start with Jenny still out of action although she is on the road (albeit a long and windy one), to recovery. Kor, Robin, Les and I all decided to head overseas in February. Les went to England to see his first grandchild, Shirley and I to Bangladesh and Robin and Kor to the South Island. This resulted in no newsletter in February and the A.G.M transferred to March but otherwise situation normal.

I am pleased to report that most of the 2007 committee have sought re-election, but at the same time sad to announce that Brian Riley and Les Duffield are standing down.

Brian Riley has been with us for two years and we are sad to see him go but thank him for his involvement and friendship. Brian is a demon shopper especially for the B.B.Q and a gun cook on it. There is no fuss with Brian – he just quietly gets on with whatever is needed.

Les Duffield is going after 4 years – sorry that doesn't qualify for the gold watch!

If I could find fault with Les it would be that he is too passionate and does get upset when things do not go quite right, but I would like to include an extract from his email sent to me before the A.G.M "At times it appeared that you and I were at loggerheads. that was not so, merely 2 people passionately putting our ideas to others". So true. At the end of the day Les always does and will stand up for what he thinks is right and we have always ended friends no matter how frustrating we could be at times. Thanks Les for always being there for the past 4 years. Les is continuing on with his role with Neighbourhood Support and in fact has just become Treasurer for the West Auckland branch.

We have also lost the services of Oliver Driver and Simon Prast so the committee was reduced by four and gained none, which means we could do with another couple of members. If you are interested give me a ring.

The A.G.M was an interesting and informative night although the number of attendees was disappointing. Did you know that the Waitakere Ward is the same size as Thames/Coromandel District Council and that Waitakere City is bigger than Wellington City? One thing I can assure you of is that we are well represented on council by Penny Hulse and Paul Mitchell and believe me they do not agree on everything, which provides a good balance.

The major issue for 2008; following on from wheelie bins, heritage park and Ward Boundaries; is the Auckland Governance Commission, or 'Supercity; to be or not to be', and I encourage you all to find out about this. I attended a combined Ratepayers' group meeting last month at the Council and this is an important issue for us all. As individuals we have the right to make submissions. Details of how to do this are on the Royal Commission's website www.royalcommission.govt.nz, and also the Council's website www.waitakere.govt.nz. There are a large number of issues that will affect how we are governed, not only in Waitakere but the whole Auckland region in the foreseeable future.

Back in little old Waiatarua things are starting to happen with Yoga on Monday nights, Table Tennis is now back on Tuesday nights and The Waiatarua Performing Arts Society are ready to present their latest production. Keep an eye out for Quiz nights coming your way once again very soon.

I am looking forward to another year working with Kor Prins, Jan James, Jan Haine, Jenny Bebbington, Robin Essex, Frank Hogsden, and Susanne Timms. Also Jenni Hunter has agreed to proof read our newsletter for another year, correcting all my mistakes. Please continue to send all newsletter articles, adverts etc to me, also all Hall matters should be directed to me also.

Don't forget those subscriptions for 2008 are due so \$10 per family in an envelope, with name, address, 'phone number and email addressed to 'The Treasurer, 911 West Coast Rd, Waiatarua'.

That's all for now – Dave

Waiatarua Quiz Night

Back due to popular demand!

Our next Quiz Night is
Saturday 17 May at 7.30 pm

at the Waiatarua Hall, 911 West Coast Road

Create a team of 6-8 people, or just drop in and become part of a friendly table team.
Use your imagination to create a catchy name for your dynamic crew.

Fantastic prizes to be won once again. Don't miss out!
Cover charge just \$5 per person. Please BYO drinks and nibbles
(this allows us to keep costs down so that everyone can enjoy a very affordable night out)

For more information, contact Ian Ford on 814 8871

We bid adieu to our good friend and colleague John Hinde a few weeks ago. John, Helen and their family have moved to the sunnier and drier climate of Nelson, where we hope Waiatarua Volunteer Fire Brigade's loss will be Stoke VFB's gain.

And we'd like to convey our sincere thanks to Don Bennington from Cleaco Clean Air Company Ltd for his generous donation of several hundred dollars worth of large-diameter flexible pipe for a fume extraction system in our appliance bay.

Recent Calls

- 7:32 pm, Sat 2 Feb – Car rolled, Piha Rd. Yet another accident at the black spot on Darkeys Hill but fortunately no injuries this time.
- 9:13 pm, Sun 3 Feb – False alarm, Piha Rd.
- 7:25 pm, Sat 9 Feb – Medical assistance, Bethells Rd - handled by Bethells Brigade
- 1:04 pm, Sun 10 Feb – Car crash, West Coast Rd.
- 3:29 am, Sun 17 Feb – Car vs pole, Scenic Drive. Somehow, the driver of the 4WD that hit and broke a concrete power pole was able to drive away by the time we arrived.
- 10:14 pm, Fri 22 Feb – Lines arcing outside Elevation Cafe. Generator used to ensure wedding celebrations there could continue.
- 11:10 pm, Fri 22 Feb – Lines arcing, Scenic Drive. Scene protection until dangerous tree cleared by contractor at 2:30 am
- 5:41 pm, Sat 1 Mar – Rubbish fire, Te Ahuahu Rd, Piha
- 5:26 am, Sun 9 Mar – Car rolled, Lake Wainamu sand dunes behind Bethells Beach. We didn't need to stay and assist the other Brigades at this crash where one young man lost his life.
- 9:35 pm, Sat 15 Mar – Car fire, Piha Rd
- 10:50 pm, Fri 21 Mar – False alarm, Piha
- 3:35 am, Sun 23 Mar – Car crash, Scenic Drive. One person went to hospital, and we stayed on the scene for 2 hours to assist Police Serious Crash Unit with lighting and road closure.

Contacts

Always dial 111 for any incident you want the Fire Brigade to attend, no matter how small. Otherwise please call Ian Ford (814 8871), Helen Longley (814 9855) or Karl Nuttall (814 8777).

Bangladesh

"Why on earth are you going there" was the common cry after people composed themselves and their mouths shut from the shock of our destination. I must admit that in the later stages prior we were asking ourselves that too. However, now we know – it is a fantastic trip if you are into roughing it a bit, love learning about different cultures and like spicy food.

Sure there was poverty, rubbish and smelly toilets but the people were super friendly, the food was fantastic and the scenery great. With a land area of just 143,998 sq km. and a population of 140 million it is somewhat crowded - 95% Bengali, 2% Bihari, 3% Indigenous. Dhaka has a population of 10 million and the traffic is absolute chaos with heaps of buses (battered and bent) and trucks, cars, millions of TukTuks, bicycle rickshaws and vans all fighting for road space, accompanied by continuous horn blowing. Seven lanes trying to squeeze into three provides a challenge. Bangladesh has great colour and a fantastic atmosphere. The locals are fantastic too, with the women being absolutely gorgeous; in fact if they played their cards right they could have me for free (Shirley feels quite safe).

Driving in the countryside presents another type of excitement as passing occurs anywhere, blind corners, blind brows – with the main challenge seeming to be how close you can pass the opposing vehicle without hitting it. We used to call it playing chicken when I was a young lad. Mind you, I should add that the average speed is only 40k.p.h.

Being undiscovered by the tourist world, white people especially are hardly ever seen, so we created great interest wherever we went and when taking photos often found ourselves looking into the camera lens of a mobile phone. This even took place in the bus whilst sitting in the inevitable traffic jam. We experienced an insight into the life of film stars, with crowds following our every move, all very friendly with a genuine interest shown by the locals, and I might add we felt perfectly safe at all times.

Travelling around two things strike you: how flat the land is and the distinct lack of machinery. A large area of land is in rice paddy fields and although we get upset when we read about the monsoon damage, which by the way happens every year, it is a very important part of their ecosystem. The monsoons cleanse and replenish the soil, in much the same way as the bush fires in Australia invigorate the growth of their trees. The Tsunami last year was a different story but also only affected a small part of the coastal area.

I say there is a lack of machinery, in actual fact there is an enormous pool of machinery called human beings and everywhere there lines of men and woman shovelling and shifting whatever needs moving. Trucks are loaded and unloaded totally by hand, road repairs and road building the same, even to the point that the concrete mixers are hand operated.

– **Dave Pocock** (continued next month!)

Speckles Puppy Found!

Actually he came back through the hedge all by himself. After 8 days lost from our Bamboo Farm, I would like to express our heartfelt thanks to all the amazing people who helped us track his progress.

Following a letterbox drop and fabulous community networking we were able to learn he'd cried the first 2 nights in the Reserve at the bottom of Bendall's Lane, then walked to Kelly's Rd, headed uphill on West Coast Rd and presumably back up through the bush again, the road verge being too dangerous to walk, before finding our 4 day old tracks home. Rather thin and very hungry, he is otherwise none the worse for wear and tear.

Just an aside regarding the beauty of our Waiatarua reserves. Some parts of the stream are a bit dangerous and need good light to avoid deep root holes, but the breathtaking beauty of the small mono-forests is really something to experience.

The West Coast Rd verge near Kelly's Rd is disappearing into the scoured clay drain, again, taking the orange warning mesh with it. Hopefully some of the \$9.2m allocated to repair the streams will be used there very soon and give us a much needed footpath over the downhill culvert pipes.

– **Pauline Isaachsen and family**

Garden Group

Eileen Powell

Our May visit is to Gardenza, which is a sub-tropical oasis in South Auckland. David Brundell is an ornamental horticulturalist who grows dramatic shrubs and flowers. The address is Glenbrook Beach Rd, Waiuku and we are booked for 7 May at 11 am. The entry fee is \$5 Everyone is welcome to join us, just ring Eileen on 8149 298 or email etpowe@clear.net.nz.

Brickbats and Bouquets

Sponsored by the Fairy Flower Shop
423 Titirangi Road, Titirangi, Phone 817 3780

No Bouquets this month, but a few Brickbats to award . . .

Hoons who do donuts and burn outs on Tawari Road and in the Spragg's Bush Car park. They are not only a nuisance because of the noise and the mess they make from spinning the gravel up, but are also an accident waiting to happen.

Driver of a car (license plate DAD632) driving erratically up Mountain Road on Sunday. Upon closer inspection I could see why - the driver was eating an ice block. As if that wasn't bad enough, their passenger decided to throw the packaging of their ice block out the window. They then turned into Turanga Road.

People who dumped their weeds beside the bin at the top of Kauri Loop Rd. We hope you're going to clean it all up. The weeds go in the bin - if it's full, take your weeds home.

Advertising and Community Notices

Commercial advertisements are welcome and can be arranged by contacting Dave Pocock, ph 814 9697 or email davepocock@xtra.co.nz.

Community notices are free to financial members.

House for Sale Great for family living or for a couple who enjoy space & entertaining, bush & tranquility. 3 dbl bdrms, bathroom & ensuite, dbl garage, OSP, large sunny flat lawn area, lots of storage, Rateable value \$560,000, Offers over \$499,000. Trademe REF#135812302 phone owners on 836 7572 or 0274 586 437

Acting Classes for Adults with tutor John Goudge, Rimu Glade Studio, 4 Rimu Rd, Waiatarua. 8-Week course: Improvisation & Theatre Games. John's infamous & hilarious course is for anyone. Create an amazing show for a live studio audience. Monday nights, 5 May - 30 June 'phone John on 814 9744 for info.

Gardener Trained and experienced. For regular garden maintenance, phone Hugh 838 3594.

Handyman Work Reliable, efficient with fair rates, SPECIAL - gutters cleaned and gutter guard installed from \$45. Phone Mike 814 9708

Lawn Mowing Local, reliable. Phone Eric 837 2333

Otimai Events and training centre available for hire (Guides Auckland). Open to view by appointment. Phone Lynne or Walter on 814 9992

Oratia Community Church Corner Parker & West Coast Roads. Activities - Bible Study & Prayer Group, Tuesdays 1 pm. Fellowship (trips, meetings, etc), 2nd Thursday of each month.

Waitemata Tecorian Speakers Gain confidence, communicate more effectively, extend knowledge, stimulate imagination and have fun at the same time. We meet at the Titirangi community centre every second and fourth Tuesday evening at 7.30 pm. Men and women are welcome. Contact Margaret on 817 0520 or Gill on 838 1983 for more information.

West Auckland Historical Society Meets monthly, every third Tuesday (February to November). Guest speakers each month. For further details contact Vivien on 833 4692.

Toastmasters Meetings held every other Thursday morning from 7 am - 8.20 am. Call Adith Stoneman on 818 7728 for more information.

Yogalife Complete Mind and Body Fitness

Wednesday 6-7.30pm, Oratia School Hall. Mixed level class.

Bring a mat and blanket. Wear comfortable and loose clothing. Do not eat for approx 1.5 hours before the class.

Ph Megan 817 5999 for brochure/more info

Hall Hire

911 West Coast Road, Waiatarua

Meetings ♦ Classes ♦ Celebrations

Contact Dave on 814 9697

annie prince

aromatherapy for women

aromatherapy treatment

allow 1½ hours - \$80

reflexology

allow 45 min - \$50

Oratia, Auckland

Email meredithprince@xtra.co.nz

phone 814 1896

mob 021 500 086

Radiant Yoga

- ✓ Refresh
- ✓ Recharge

Join in a Beginner to Intermediate level Yoga class

Waiatarua Community Hall

Monday night 6.30pm -- 8pm

- ✓ Bring yoga mat and blanket
- ✓ Wear loose comfy clothing
- ✓ Avoid meals for 3 hours before

For more info

phone Olwen on (021) 186 1438

HIRE ME

1.5 TONNE
DIGGER WITH
TRAILER

LOCAL

Short or long
term hireage.
Excellent rates.
Delivery service available

TELEPHONE 027 289 0371

ORATIA PLUMBING

LIMITED

Registered Master Plumber

Maintenance plumbing, hot water
cylinders, additions & new construction.

CRAFTSMAN PLUMBER WITH
MANY YEARS' EXPERIENCE

PHONE BRIAN

0274 732 217 or 814 9957 a/hrs

Enjoy relaxed indoor/outdoor dining at
Auckland's most elevated café.
Expansive views over lush native forest to
Auckland and the beautiful Hauraki Gulf

Monday & Tuesday - Sorry we are closed

Wednesday - Friday 12 noon till after dinner

Saturday & Sunday 10 am till after dinner

ELEVATION

LICENCED CAFE & RESTAURANT

Ph 8141818 ♦ 473 Scenic Drive Waiatarua
www.elevationcafe.co.nz

WAITAKERE ESTATE

Auckland City's Rainforest Retreat

Great menu selection Magnificent views

Open Thursday-Sunday for lunch and
dinner; brunch Saturday and Sunday

Telephone 814 9622

573 Scenic Drive, Waiatarua

www.waitakereestate.co.nz

WEST COAST PAINTING



Quality painting
for your home or business

To arrange a free quote
for any work you need doing call Savage
Home: 812-8155 or Mobile: 021-620987

WEST COAST VETERINARY CLINIC

- consultation & medical treatment • surgery
- radiology (X-rays) • ECG • measuring & monitoring
blood pressure • dental services (ultrasonic scaler
& micromotor) • microchipping • housecalls
- selected pet foods & requirements • easy parking

We love them as much as you do!

Hours: Mon-Fri 8.00 - 6.30pm
Saturday 9am - 12noon



Phone 818 4104 for an appointment

BIZART



logos

INVITATIONS
business cards
advertisements

Over 25 years experience providing
powerful, cost effective & successful
graphic design.

Ph 814 9796. Email: jenny@bizart.co.nz

SHOW PEOPLE YOUR IDEAS, NOT YOUR MISTAKES



Proof reading, editing and
document structure.

Applications, essays, books, CVs.

Reasonable rates, fast service

CONTACT JENNI AT: littlefishes@actrix.co.nz

Longley Printing Co. Ltd. is proud to support their community by fully sponsoring this publication.

Longley Printing Co. Ltd.

For all your printing needs including Offset, Letterpress, Hot foil stamping, Typesetting, Photocopying

29 Bruce McLaren Rd Henderson - Phone 837 0729 - Fax 837 0732 - email print@longley.co.nz

May 2008 Newsletter

Copy to be sent to
davepocock@xtra.co.nz
(Phone Dave - 814 9697)

by **Wednesday 16 April 2008**