



# Community News

APRIL / MAY 2000

EDITOR:

JOSEPHINE HALL

WRRRA PRESIDENT:

GERRY DAVIS PH 814-8833

## This month at WRRRA

by Denis Graham

The membership of the WRRRA for 2000 now stands at 67, so it is good to see renewals and new subscriptions coming in. The total membership for 1999 was about 190, so there is still a way to go to reach this figure.

There are some exciting social events coming up this year which will be mainly funded by the WRRRA so your financial support would be greatly appreciated.

Issues discussed at April's meeting included:

- Committee members responsibilities have now been assigned and are as follows:
- Council Meetings - Gerry Davis and Denis Graham.
- Community Board - Geoff Wood.
- Community Hall and Social Issues - Eileen Powell and Terry Chapman.
- Committee Secretary - Bernadette Fastnedge.
- Political - Gerry Davis, Wade Cornell and Denis Graham.
- Advertising/Quotes on repairs and maintenance - Deidre Ward.
- Newsletter Editor - Jo Hall.
- Correspondence, Minutes and Agendas - Gerry Davis and Bernadette Fastnedge.

**ROAD/VEHICLE SURVEY:** Wade Cornell had contacted various Athletics and Cycle clubs and has been informed that their training regimes begin at the beginning of April each year.

It has been decided, therefore, to conduct another survey/count. This took place on Sunday 9 April 2000. The volunteer counters were situated at the junction of West Coast Road and Scenic Drive - you may have seen them sitting in the rain.

### SUBMISSIONS TO WAITAKERE CITY COUNCIL ON 2000/2001 ANNUAL PLAN:

- Safety on the roads, pathways/cycle ways, in our area is a major concern of the Association. Our submission will request that Council commit sufficient funds, in their budgets over the coming years, to ensure the safety of everyone using our roads and pathways.
- Our Association supports the Piha/Karekare Ratepayers Associations in having Lone Kauri Road fully sealed.
- As well as supporting Council in upgrading the Aquatic Centre, our Association will also ask for other sporting codes, e.g. Cycling, Athletics, Soccer, etc to receive funding in support of their pursuits.

It still seems likely that the Vehicle Testing Station will be sold off. Remember, we, the ratepayers, own this asset. More information is being gathered from our councillors to assist in our submission.

**LIGHTING COMMUNITY HALL:** Censor spotlights have been purchased and will be installed very soon. The committee is also considering lighting up the native bush in the surrounding area. Tests have been carried out and the native trees, pongas and ferns looked fabulous.

### THE MULTI-MEDIA QUIZ NIGHT:

**When?** Saturday 6 May 2000 at 7-30 p.m.

**Where?** Waiatarua Community Hall.

Make sure your street, road or avenue is represented. There will be a \$2.00 per head cover charge but alcoholic and non-alcoholic beverages, and nibbles, will be provided.

Contact Terry Chapman on 814 8778 to register your team.

A suggestion has been made that the Association put on a mid winter feast, to be held round about the Winter Solstice. Would you be a go-er for this? Contact Terry, Eileen Powell or the editor, so we can gauge the support for this planned event.

The next WRRRA meeting will be held on Monday 1 May 2000 at 7-30 p.m. in the Waiatarua Community hall at 911 West Coast Road.

If Coro Street is not too hot that night come up and join us.

## Obituary

### Neil Pullan—1935 - 2000

No one seemed to mind the very audible panting of a large German shepherd dog throughout the service, one soft, sunny morning, last month at the Oratia church. A chuckle rippled through the congregation when a little dachshund gave a short bark of approval during a brief pause in the vicar's reading of the Scriptures. For we had all gathered at the church that day to pay our last respects to Neil Pullan.

Neil had, for many years until his retirement in March 1999, been our resident veterinarian. He had made many friends during that time, and was held in high regard in Waiatarua, and surrounding areas, for his dedication to his work, tending our assorted pets with genuine caring and gentle patience.

Neil was born in Wellington, in January 1935. Following the death of his parents, he went to live with his Aunt in Ashburton. Here, he attended school until he entered university. Graduating from Sydney University in 1960, he returned to New Zealand where he practised for the next five years. It was during this period that he met and married, Margaret.

Neil had a great interest in Parasitology and Tropical diseases in animals. It was this that took him and Margaret to Edinburgh, where Neil studied for his diploma in Tropical Veterinary Medicine, followed by an M.Sc.

The couple then returned to New Zealand. Neil worked for several years at Wallaceville Animal Research Centre where, for a period, he worked on 'Liver Fluke', an emerging disease in NZ at that time. He was then appointed Superintendent of the Bruscellosis Lab. which was established to deal with the eradication of this disease.

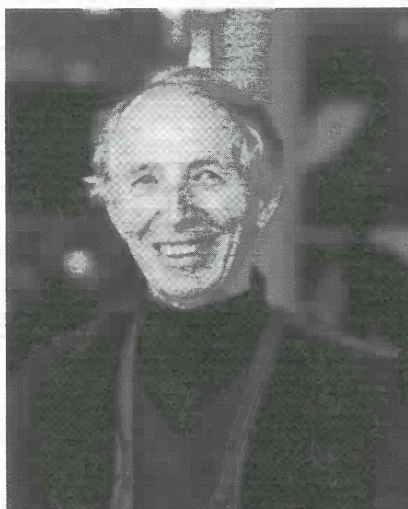
It was then back to Edinburgh for this intrepid couple, where Neil, as a staff member of the Centre for Tropical Veterinary Medicine, was recruited by British Aid to Nigeria, where he and Margaret spent the next three years. On their return to Scotland, Neil went back to the CTVM to do further research for a brief period. This was followed by several years of small animal locums throughout Britain. Papua New Guinea was the next port of call, for Neil and Margaret, where Neil became Director of the Central Laboratory in Port Moresby. Returning to NZ briefly, as having joined the United Nations they were soon on their way to Libya, where Neil was team leader for a research programme, based in Tripoli. From Libya, Neil and Margaret travelled again to England doing small animal locums for the next two years until Neil was appointed by British Aid as vet to the Falkland Islands, just a year after the conflict. They both enjoyed the next three years very much.

Neil, working as vet to the Agricultural Research Centre, was able to make a video of the veterinary side of the Centre, which was distributed to schools throughout the Falklands. He also broadcast a regular radio programme for farmers.

From the Falklands the couple returned to England, but only for a short time, for they decided to return and settle.....in New Zealand. In Waiatarua, New Zealand, actually. To our great fortune.

To Neil, and to his soul mate, Margaret ... our love and our thanks.

Judy Roberts





## A Tribute to Neil Pullan

I have known Neil and Margaret Pullan for six years, and I've felt they have done many things for me during this time. They always impressed me as a couple, a couple who worked extremely well together.

The hymn, or prayer, of St Francis at Neil's funeral was very appropriate. His caring for animals was well known in the Waitarua area, and went far beyond what was strictly required, in his profession as a vet.

When my golden retriever, Tristan, of nearly fifteen years was in the final fortnight of his life, collapsing and hardly eating, Neil came to check on him each day while I was at work. He gave Tristan medication and took him for a walk to the letterbox, or beyond, if possible. Neil said to me that the walking was also good for him. Walking was part of Neil's dealing with 'living with cancer.'

When Neil told me, in August 1998, it was time to let Tristan go, on a physical level, I had difficulty coming to terms with this. Knowing Neil, meant this could happen peacefully at home.

Neil Pullan's calm, practical approach helped many people dealing with their issues around their animals.

On the 7<sup>th</sup> March 2000 the time had come for Neil to let go on a physical level. In the memories of the people that knew him, he will remain very much alive.

*Jenny Clay*

## Playcentre

Wow! What a busy and fun term we have had.

Firstly the children were treated to a magical and fantasy filled day, with Fairy Clare, and her helpers, at the Parnell Rose Gardens.

Then we had a truly family co-operative weekend on our Playcentre Camping Trip at Shakespeare Park in Whangaparaoa Peninsula. This was an extremely successful weekend with everyone having an enjoyable and relaxing time. Not only did present Playcentre children enjoy this experience, but past playcentre children were able to spend time with old friends, and parents had the opportunity to get to know each other better. The walks along the beach, splashing in the water and roasting marshmallows on the campfire, while also spending quality time with family and friends.

We also enjoyed a train trip to Rocket Park. We caught the train in Henderson, and after a very noisy trip and helpful conductor, we managed to exit the train and spend the morning at the park, before our return journey.

Apart from our wonderful outings away from our centre, our sessions have been full of enthusiasm, creativity and fun.

We have had many new enrolments, and it is going to be another great year, so why not visit us after the holidays. We'd love to see you.

Term Two starts on Wednesday 26<sup>th</sup> April and our sessions are Mon/Wed/Fri 9.15am - 12.15pm.

We are situated at 911 West Coast Road, down the driveway next to the Community Hall.

PHONE 814-8835, OR ELKE, AFTER HOURS, ON 814-8803

## Richard Hoyle

Richard Hoyle, a member of the Waitarua Ratepayers for many years, has retired from the association. He has served this community for many years and continued to do so long after he moved to Henderson.

He served on the ratepayers Association as president, and for the last 5 or 6 years as the past president. He has helped us, the newly elected members, get caught up with the history of the area, and who to go to, to get things done.

We will miss his good sense of humour and the wisdom he shared with the association.

Thank you for the many years of service Richard.

*Gerry Davis*

## Fire Brigade News

You've been distracted while cooking dinner, and come back out to the kitchen to find that the pot of oil has boiled over and caught fire. The flames are over a metre high, and you can't see the ceiling because of the thick black smoke. What do you do? (No hurry - we'll give you 5 seconds to think...)

What you should do? - get the family out, call 111 and ask for the Fire Service. If you can do so safely, you can use the fire extinguisher or fire blanket you've got in your kitchen (yeah, right) to smother the

flames. Or try a wet tea towel over the lot. But you should NEVER throw water on to the fire. And we don't recommend trying to carry a burning pot of oil outside - there's a high risk of spreading the fire, as well as getting seriously burnt, yourself. If you do have an extinguisher or fire blanket - do you know how to use it?

Take 2 minutes out today to read the instructions. Before you need it.

## Training:

Apart from the regular Monday night training, two Brigade members attended weekend training courses at the Mt Wellington Training Centre in March. Congratulations to Robert Lovrich who passed his Senior Fire-fighter / Officer course, and to Gareth Mullins on his Basic Fire fighting and First Aid courses. Early in the month Ian Ford and Richard Seccombe attended the United Fire Brigades Association conference in Whangarei. Many topics were covered in operational, administrative and management areas.

## Calls For Last Month:

Have you ever wondered what that siren was doing, disturbing the your beauty sleep in the middle of the night? Wonder no more. Starting this month we'll give a brief summary of the previous month's calls, space permitting. There were 5 fire calls in March, making 15 for the year.

Wed 8th, 20:14 - False alarm, Piha Road

Wed 8th, 20:20 - Car and bush fire, Scenic Drive

Sun 12th, 13:17 - Attempted car fire, Scenic Drive

Thu 16th, 00:20 - Car fire, Scenic Drive

Fri 31st, 20:45 - Kitchen fire, Tui Crescent

The 8th of March was only the second time in the last 10 years that there have been concurrent calls in Waitarua.

## Eating Organic

*by Steve Edwards*

Elsa Clark, with partner Steve Edwards, opened Earth Seed Organics, late in 1998 in what was the old Fairy Flower shop. The old packing shed with its distinctive fairies has been transformed inside and out, new paint, insulation, a coolroom, new kitchen, office and the addition of an outside porch to keep the weather at bay.

Elsa has a long connection with organics. Parents, Marjorie and Gerry, ran Homelands Organic Orchard in Kerikeri, and were pioneers of the organic movement, their Bio-Gro registration number is 002. Bio-Gro is now the major certifier of organic produce in NZ and the Pacific. Marjorie is legendary for her enthusiasm and hard work, and the quality and variety of the orchard's produce. Gerry too is legendary, his sailing exploits aboard 'Totorore' earned him an MBE for ornithological research in the Antarctic. It was a sad loss when at 72, along with crew mate Roger Sale, he was wrecked and lost on the sub-antarctic Antipodes Islands last June, as they assisted DOC with albatross research. Elsa continues the family enthusiasm, 'Earth Seed' seemed the natural thing to do.

Eating organic food is one of the most important contributions any of us can make to the planet. Over 4000 tons of pesticides, herbicides and fungicides are used in New Zealand every year. More than half of these, are known to cause cancer, birth defects, genetic changes or serious irritation if ingested directly. We have convinced ourselves that food can be exposed to such poisons without being absorbed. The increase in cancers, and other allergies, seems related to the growth of agri-chemical use. There is evidence to suggest this.

In 1998, government tests showed detectable residues in all types of supermarket fruit and 87% of vegetables sampled. Eating organic food is the best way to encourage farmers and to stop the spread of poison in the land, water supply and our food. The term "Organic" is protected by EC law. Food is produced to international standards, regulated by a body such as 'Bio-Gro'. Where growers are not registered, Earth Seed states this as 'grower claimed organic,' where the integrity of the supplier is trusted.

Organic food may cost more in the short term (although some seasonal produce is competitive). However, the long term cost of non-organic agriculture, both to ourselves and the environment, is incalculable. Apart from leaving chemical residues in the water and land, with various long term effects, conventional farming uses more crude oil than any other industry, with the manufacture of synthetic fertilisers and pesticides. Millions of tons of topsoil are washed into the sea due to soil structure being broken down. The Bombay Hills south of Auckland are now suffering the results of intensive farming. Meanwhile, mountains of surplus are created and never used, or dumped in third world countries,

# GARDEN GROUP

This month we are spending some time learning about growing herbs, and their many uses, with Beryl Simpson. Beryl is well known in the area for her herbal massage, and many residents will have felt on top of the world after a visit to her. She grows an interesting variety of herbs, and is very knowledgeable. Meet at 797 West Coast Road at 1pm on Wednesday 3 May.

Anyone is welcome, and for further information ring Eileen on 814-9298.

I am compiling a list of e-gardeners, who would like to receive notice of our programme by e-mail.

Please contact me on [etpowe@clear.net.nz](mailto:etpowe@clear.net.nz)

at the expense of their own farmers.

Here are 10 good reasons to **Go Organic**.

1. You enjoy great flavour and higher nutrition
2. You protect future generations throughout the world.
3. You pay the **real** cost of food production
4. You have an independent guarantee with certified product
5. You protect water quality
6. You keep chemicals off your plate
7. You prevent soil erosion
8. You encourage small farmers
9. You help to maintain and restore biodiversity
10. You reduce global warming and save energy

Earth Seed is open seven days a week, 9-6 Mon to Friday, 9-4 Saturday, 11-4 Sun.

Good range of fresh, packaged, bulk, dairy food and bread. Healthy lunches and snacks. Organic gardening supplies, body care range and homoeopathic remedies. Children's toy corner, easy parking, friendly, personal service. Reasonable prices. If we haven't got what you need, we will try to find it.

Ph/fax 818 6411, 547-549 West Coast Rd, Oratia. (opposite Mobil)

Steve and Elsa moved to Waiatarua in December 1999.. have you noticed the new group of three, designer wooden letter boxes, on West Coast Road? These were hand crafted by Steve, himself.

## Waiatarua Amateur Dramatics

If you look at the sign outside the Community Hall, you will see that the hall is also the home of the Waiatarua Amateur Dramatics Society - and indeed there is a large stock of props and costumes kept at the hall. Performances by the Waiatarua group, once attracted audiences from all over Auckland, but, for various reasons, the group's activities lapsed, with the most recent productions at the Hall being staged by the Waiatarua Fire Brigade.

Putting on a play requires work and talents of many kinds: stage hands, lighting controllers, broom pushers, scenery and costume makers etc etc. as well as those brave enough to go in front of the footlights. It has been decided to reawaken the Amateur Dramatics for 2000. Please come forward if you would like to be involved in any way. We would particularly like to hear from those with experience in producing any of the previous plays.

If you would like to be involved, in any way, ring Terry Chapman on 814 8778.

## Congratulations to...

Ronnie, Andrea and Tyler, of Rimu Road, on the birth their daughter and sister, of Keeley Jade, (3.865kg), on Thursday 30<sup>th</sup> March, 2000.

## Welcome to Waiatarua...

...Ian and Caroline, and their children Rhiannon and Benjamin, moved to Scenic Drive, Waiatarua from Howick, in early March. Caroline says as they drove around Waitakere City, looking for a place to settle, they liked the idea of a small community, such as Waiatarua.

...Rodney and Bridgette who moved to Cascade Ave, in January.

## Library News

We now have the first three copies of 'Consumer' Magazine 2000, available for reference in the library.

A new series of the Antiques Roadshow has just started on TV 1 at midday on Sundays. The library has a copy of 'The Antiques Roadshow' by Fiona Malcolm, which gives interesting background on the production of the show, as well as being beautifully illustrated.

### New Books : (NON-FICTION)

'The Naked Rower' by Rod Hamill

'Ghosts of Cape Sabine' by L Guttridge

'Tall Spars, Steamers and Gum' - the Kaipara Harbour  
- by Wayne Ryburn.

### (FICTION)

'The Pilot's Wife' by Anita Shreve

'Fortune's Rocks' by Anita Shreve

'Saving Faith' by David Baldacci

The library will be closed over Easter (April 21-23) and open again on Thursday 27<sup>th</sup>.

## Letters to the Editor

To the Editor,

With reference to the letter last month, concerning the delivery of the newsletter, I would like to make the following comments.

The delivery cannot have been too bad to only just provoke a response after sixteen years. Maybe it is because the content has so improved under the latest editor, that the correspondent cannot wait to devour the content.

Quite rightly reference is made to the voluntary nature of the delivery. It should be pointed out, that to deliver in the Waiatarua area, with no footpaths, is to take your life in your hands. Hats off to the champions who venture out on our behalf, to take on the lunatic traffic racing at full throttle, on roads that are not even legal width. They risk being pitched headlong in to the deep ditches, filled with debris thrown from these same vehicles.

My suggestion is that the correspondent should volunteer to deliver the newsletter for a spell. That should guarantee them being first to turn the pages.

I am sure the Waiatarua Ratepayers Association has considered 'snail mail'. Apart from the cost, volunteers still need to fold, address and stamp the mail. Admittedly this could be a way of only delivering to those households who paid the subscription. Economies will be made as the subscription list could well shrink, after doubling the fee. I favour a free press, available to all.

Another way is to pick it up from the Library, or maybe the local dairy, as from a certain date each month. This requires some effort on part of the reader, I know, but it must be worth it.

Perhaps we could move in to the 21<sup>st</sup> Century and deliver by e-mail. Or, dare I mention it, how about a Web Page! [www.waiatarruanews.co.nz](http://www.waiatarruanews.co.nz).  
...Tony Powell

## Roading

by Deidre Ward

Isn't it great to see improvements on our roads, particularly those that make sense and improve safety, considerably.

Thank you to all those people who have worked towards having this work done, but especially Roger Ward at Waitakere City Council. The improvements to the Scenic Drive/Piha Road intersection were very much needed.

I live on Scenic Drive, not far past this area (towards the tv mast) and travel this way many times a day, as an unpaid taxi driver. Before the changes were made, coming down the hill, one hand was always poised above the horn, head was turned to the right to check if anything was likely to run the Stop sign, before continuing.

Coming home the safer option seemed to be to indicate that I was continuing on Scenic Drive rather than going to Piha, as most people seemed to expect. This often caused much confusion to cars that firstly seemed not to believe there would really be a Stop sign, and then failed, even to give way.

Travelling this road is now much more relaxing. Let's hope that these changes are the beginning of a continuing trend of improvements to the roads in Waiatarua. Do phone Roger Ward, or a committee member with feedback about the changes, and how they affect you...it may even help us with further roading issues.



# ADVERTISING

*This is free to financial members for 2000,  
January to December.*

*A list of financial members is available at the library, and  
any queries about membership can be answered by  
phoning the Treasurer – Eileen Powell on 814-9298*

**Repeat commercial advertisements  
of members will only be printed  
as space allows.**

**JP** – Mary Kelly. For personalised weddings, re-affirmation of wedding vows, ceremonies of commitment, naming ceremonies, MC, Chair for public meetings etc, Phone/Fax 814 9857.

**LAWYER AND NOTARY PUBLIC** : John Hendrikse, also available after hours and at weekends. Fee when buying a house : All up \$800 ; when selling : All up \$508, with a free will.

Familiar with Afrikaans. 914 West Coast Road Ph/Fax 814-9991

**MUSIC TEACHER** – available to teach piano, keyboard and theory. Based in Waiatarua. Offers one-to-one tuition, practical and theory exams, competitions, all at reasonable prices. Contact

NZ Modern School of Music on 0800 696874

**LEARN TO SPEAK ITALIAN** - with an experienced native teacher.

Private or groups, all levels - conversation, grammar, business.

Phone Alessandra, 814-8993.

**WINDOW CLEANING / WATERBLASTING**, Chemical & House Washing. Excellent rates, free quotes. Phone Glenn 814-9480.

**AUCKLAND SUN CLUB INC.** The family club for clothes-free recreation invites you to visit. For further information please call 814-9973.

## Neighbourhood Watch

The names of our current co-ordinators are listed below. If you haven't been approached yet and would like to belong to one of these groups, give the co-ordinator a call.

NAME	ADDRESS	PH/FAX	E-MAIL
Mary Kelly, JP	3 Atarua Gardens	814-9857 + Fax	turtle@xtra.co.nz
Denis Graham	Back up - Atarua Gdns	814-9706	
Ross & Kath Mullins	330 Forest Hill Rd	814-9402 + Fax	
Jenny McGee	886 West Coast Rd	814-9954	
Chris Field	799 West Coast Rd	814-9876	chrislizf@voyager.co.nz
Ngairie Mason	21 Tui Crescent	814-9036 + Fax	
Adith Stoneman	8 Kauri Loop Rd	814-9822	
Margaret/Paddy Marshall	19 Raroa Tce	814-9859	
Gaelene/Tony Goodrich	17 Cascade Ave	814-9788	

Please accept my Membership to the  
Waiatarua Ratepayers and Residents Association

**for 2000**

I enclose: \$7 Household, \$4 Single Occupant

Name .....

Address .....

Phone .....

To Treasurer

Waiatarua Ratepayers and Residents Association  
911 West Coast Road, Waiatarua, Auckland 8  
or leave at the library

**WOODEN FARM GATES.** Tanalised timber with galvanised bolts. 10' - \$61.00  
12' - \$68.00 or made to order. Phone 814-9700.

**ELECTRICIAN** – Phone Jim your local man Phone 814-9344.

**HOME & INVESTMENT PROPERTY LOANS** : Mortgage restructuring, debt consolidation & reduction, line of credit facilities. Free independent service. Phone your local broker on 814-9544 or 025-297-0322

**WEST COAST VET CLINIC** – Offering full veterinary service for your pets, including medical treatment, surgery, radiology, dental services, selected petfoods and housecalls.

Mon –Fri 9.00am –12.00noon, 2pm–7.00pm. Sat 9.00am–12.00 noon  
3 Raroa Terrace, Waiatarua. Phone 814-9419

**DRIVEWAYS**, Garage floors, Pool and Patio Areas, Timber Decking, environmentally friendly chemical cleaning, waterblasting and sealing (to minimise future maintenance). Free Quotes.

Phone Ian on 814-8902 or 021-433-009.

**MASSAGE** for Relaxation, treat yourself (or a friend).

Vouchers available. Ph Irene 814-9311.

**HORSE MANURE** - \$1.00 per large bag. Available from the gate at 253 Forrest Hill Road. Phone 814-9771.

**THE GIRL GUIDE MOVEMENT HAS A GROUP CALLED “PIPPINS”** who meet at the Oratia Settlers Hall every Wednesday afternoon from 3.15 – 4.15pm. Pippins are girls aged between 5 1/2 and 7 years old. If you are interested, or would like further information phone Val on 814-9992

**KENDRICK PAINTING AND DECORATING:** for quality and service  
Phone Graham on 837-1612.

**PHONE “HERE FOR HAIR” MOBILE CUTS.**

Phone Lesley 814-9242 or 025-203-9276.

**VISIT “EARTH SEED” 100% ORGANIC SHOP**

for a great selection of organic and GE-free foods.

547–549 West Coast Road. Open 7 days Phone/Fax 818-6411.

**FROM MEMORIES TO MEMOIRS”** - a practical course in starting to write your own stories, for yourself, or those close to you. The course will run for six weeks on Friday mornings from 10am to midday from the 28<sup>th</sup> of April. The cost is \$45.00. For enquiries, or to book, phone Jenny on 814-9241.

**FOR SALE...BABY GEAR**, Jolly Jumper \$25, Baby Bath and Accessories \$10, Monitor \$15, Fisher Price Baby Gym \$20, Changing Table \$10.  
Phone 814-9945.

## Waiatarua Community Hall Hire

Remember to hire this excellent facility for your meetings,  
parties, dances, birthdays (children's and adults) etc.

**Lovely wooden floor for dancing.**

Friday and Saturday evenings, (including chairs & tables) \$100.

Hourly rate, (max 3 hours) \$10 per hour

Sunday to Thursday evenings

\$65, hourly rate \$7 per hour, (max 3 hrs)

Daily rates Monday – Friday, Full day \$25, hourly rate \$5

Saturdays & Sundays, Full day \$35, hourly \$7

Crockery hire \$25, Bond up to \$250.

Discount for regular users. Community Barbecue hire \$20

Phone the Custodian **Pauline Isaachsen on 814-9847**

**APRIL / MAY**

**NEWSLETTER**

Copy needs to be in the hands of

The Editor,

757b West Coast Road Road, Waiatarua. Phone 814 9945

EMAIL: forwardthinking1@xtra.co.nz

by WENESDAY 3RD MAY, 2000

Thanks to the Longley Family for printing this Newsletter.

Opinions expressed in this newsletter are not necessarily those of  
the Editor or the Waiatarua Ratepayers and Residents Association.