



Community News

MAY 1995

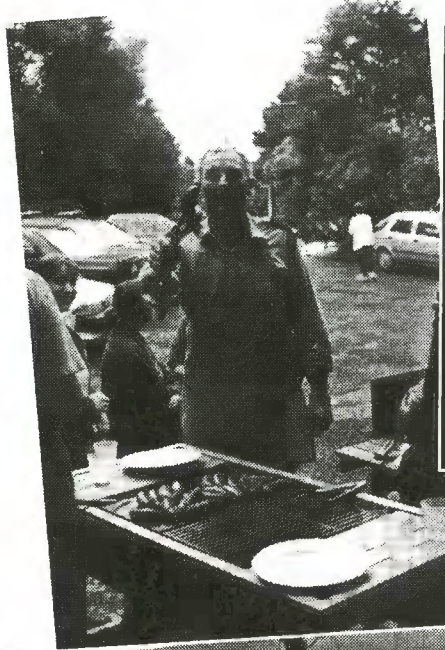
EDITOR : TONY BACON

Editorial

Your esteemed Editor is currently on a grand tour of Europe, so you are stuck with me for three months. I just hope I can remember how to do it!

Did you come and Whoopee? About 300 of us did, and had a great time. Over 200 sausages disappeared down eager throats, the Fire Brigade did a brisk trade in trips on the Fire Engine, your Association made \$107 on the raffles, the Drama Club entertained us and got some recruits, the kids got their faces painted, the Library did a roaring trade and not least, about 40 families paid their subs, bring the total of paid up members to 90 - not a bad total for the time of year. Many thanks to everyone involved in the organisation, and not least to Sapich's Wines, who gave us such a generous deal on their products.

Your new committee is anxious to make themselves known to you - the Whoopee was one way of doing that. In addition, we will, over the next few months be featuring a biography of each of the committee members, so you can see exactly what sort of animals you have elected! Last month we heard about our President, Gerry Davis. This month it is the turn of Lisa McQueen, our newly-elected Vice President.



Vice President's Message

My name is Lisa McQueen and I live in Scenic Drive with my husband and 2 young children (Matthew and Carlienne.)

My life is a happy but hectic juggle of practicing law full time, raising children, training for marathons and all those other bits and pieces that fill 24 hours a day. No doubt this is why I enjoy living among the bush, away from the hustle and bustle of city life.

Being from the mainland, and enjoying the outdoor life, I have a particular interest in the maintenance and protection of the Waitakere ranges and their foothills for the benefit of all, and it was this which prompted me to join the Rate-payers' Association.

The recent Waitarua Whoopee was a huge success, and a very enthusiastic Association is planning future events. If you have any queries or concerns about public issues feel free to contact anyone in the committee. The Association is keen to work in your interests and ensure your voice is heard in local politics.

CONTACTING YOUR COMMITTEE

If you need to contact any of the committee, here is a list of telephone numbers:

	HOME	WORK
President	Gerry Davis	814 8833
Vice President	Lisa McQueen	814 9345 303 2019
Secretary	John Hendrikse	814 9991 276 5217
Treasurer	Eileen Powell	814 9298
	Karen Davis	814 8833
	Josephine Hall	814 9945
	Kevin Healy	814 9505 636 6955
	Chuck Humphrey	814 9557 634 1414
	Tony Holt	814 9688 444 8486
	Richard Hoyle	814 9641 836 0489
	Tony Piggot	817 9075 814 9057 021 991399
	Judith Walker	814 9619

TREES FOR BABIES *a celebration of life*

This was mentioned in last month's newsletter. The date has been changed to **20 May**. For more information contact Betty Hanson 812-8681 or Janet Cole 836-8000 extension 8145.



GARDEN GROUP

This month we are staying in the area and meeting at the home of Leonie Leman, at 514 West Coast Road, at 1pm on Wednesday 24 May.

In addition to viewing the garden we will also see her aviary of exotic parrots. Car parking is available at the house which is the second one along the drive.

If anyone has any plant catalogues they are willing to swap or lend, please bring them along to the meeting.

If you have any inquiries about the group please ring Eileen on 814 9298. Everyone is welcome, just once, or every month. There is no membership fee.



PLAYCENTRE

Our sessions are as follows:

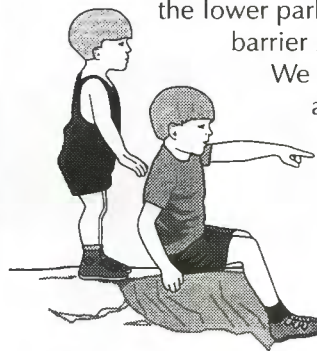
Tuesday, Wednesday and Friday
9.30 am - 12 noon.

If you are interested in seeing what goes on at Playcentre, come along during a session to 911 West Coast Road, down the driveway, or you can phone Marjan on 814-9832 for further information.

The driveway has now been repaired and sealed, so you no longer need a 4-wheel drive to get to and from the building. The next objective is to seal the lower parking area, and put a proper barrier by the side near the drain.

We expect money for this to be available from the Council in the next financial year.

Preparatory work has been done on the lower parking area, and this will be all wasted if the final seal is not applied.



WOMENS SELF DEFENCE

Classes are to be held at the Community Centre if a minimum group of 10 people can be found. The course consists of 4 1¼ hour classes at a cost of \$41.00. The course is suitable for any age or ability over the age of 14. The instructor is Francis Steinberg, who has 15 years experience in self defence. To enrol, phone Margaret Adamson on 814 9294.

Margaret is also interested in organising Fashion shows, dance classes and Yoga classes, so give her a ring if you are interested in any of these.

**YOU MAY NOT BE RESCUING PRETTY GIRLS
ALL THE TIME**

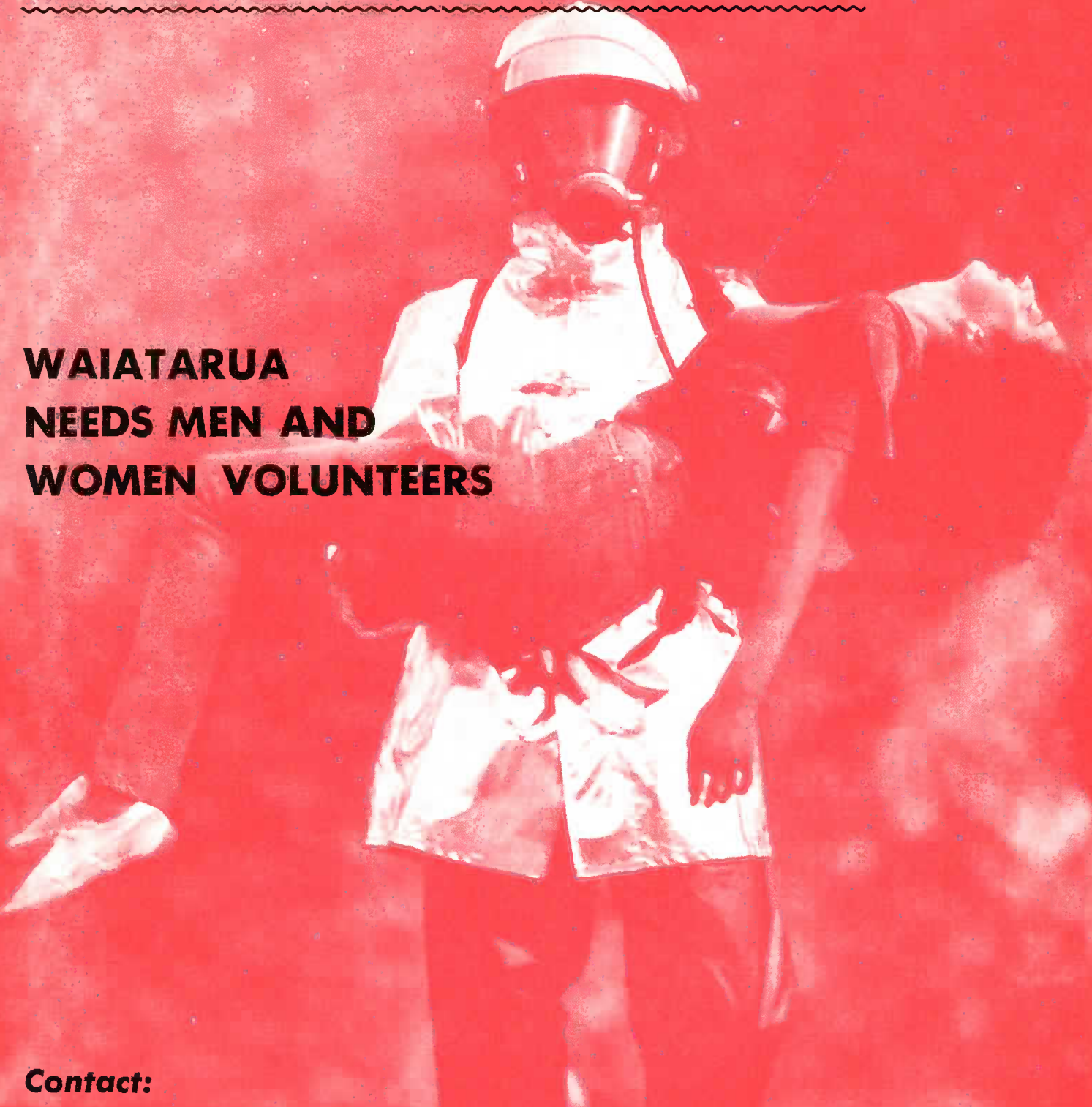
BUT YOU WILL BE DOING A REWARDING JOB

**WAIATARUA
NEEDS MEN AND
WOMEN VOLUNTEERS**

Contact:

IAN FORD 814-9618

PETER HAND 814-8860



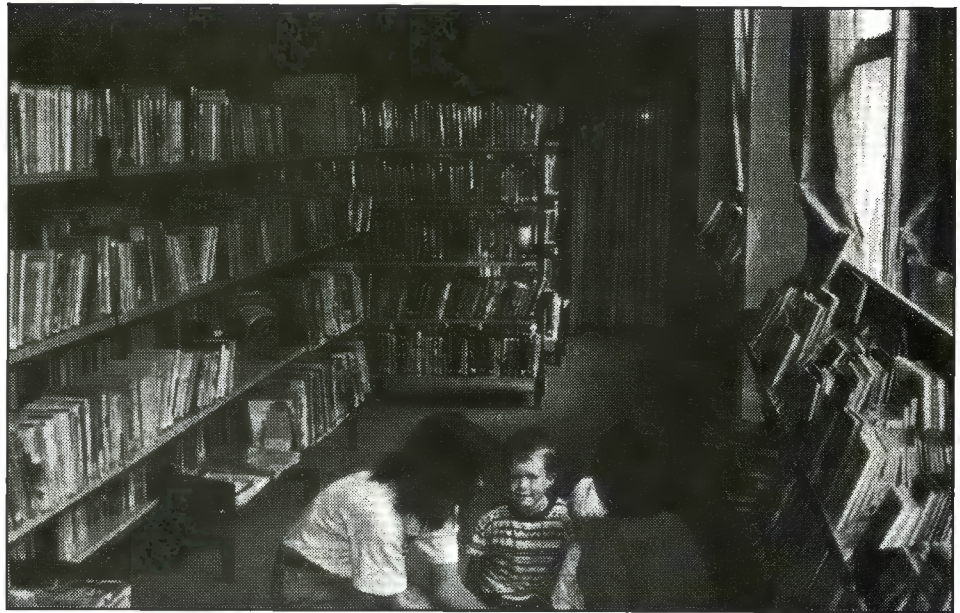
LIBRARY NEWS

The Whoopee Day proved to be a real bonus day for the Library.

10 New Families joined up plus lots of visitors. It really was encouraging. A total of 89 books were issued for the day. Keep up the good work.

New books this month are two of Sara Henderson's stories of her life in the Australian Outback.

- Strength to Strength
- Strength in us all.



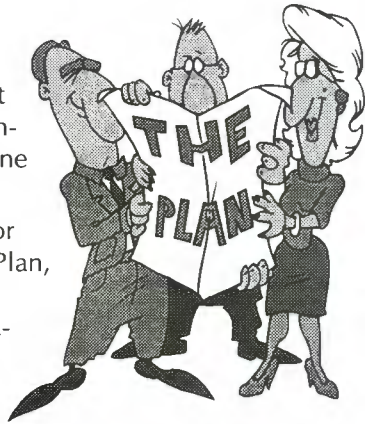
ANNUAL PLAN

Submissions and hearings on the draft Annual Plan are now getting under way. There is a meeting of the Community Board at 7pm on **Tuesday 30th May** to discuss the Plan, and everyone is welcome to attend and listen or air their views. The meeting will be held at the **Waitemata Athletic Stadium** in Central Park Drive – they are obviously expecting a large attendance!

There are also hearings on the 15th, 28th and 31st of July. Contact Alice Prasad at the Council for more details, phone 836 8411.

These hearings are for the 1995/1996 Annual Plan, and while it is not set in concrete, few new initiatives are likely to be considered at this stage. However your committee is anxious that we should be properly prepared for next year. So if you have any ideas for projects, policies or pet ideas for our area, the committee would like to hear from you. Two things that have already been raised — the provision of suitable walkways (note **not** footpaths with all the connotations of concrete and kerbing and channelling) along dangerous parts of our roads, and the return of the man with the truck and shovel to provide ongoing love and care for the water tables.

The Chair of the Waitakere Community Board is Penny Hulse, and she is always keen to hear from concerned residents. She can be reached on 832-5358.



WAIATARUA COMMUNITY LIBRARY

911 West Coast Road,
under the Community Centre.

Phone 814-9353

Hours of Opening

Tuesday	7pm — 8 pm
Thursday	10am — 12 noon
Friday	7pm — 8 pm
Saturday	11am — 12 noon
Sunday	11am — 12 noon

Books can be returned at any time through the chute by the library door.

LITTER

Litter bins overflowing with decaying Big Macs and other nasties are an eyesore and a health hazard. If you see one by the side of the road, phone the council on 836 8045, and it will be cleared.

Bins in reserve areas are the responsibility of ARC, and the best people to phone there are the Rangers at Arataki on 817 7134.



JUNE NEWSLETTER

Copy needs to be in the hands of

Tony Bacon

911 West Coast Road, Waiatarua

(Community Centre Letterbox)

by Thursday

1st June, 1995

Opinions expressed in this newsletter are not necessarily those of the Editor or the Waiatarua Ratepayers and Residents Association.

Many thanks to the Longley family for once again printing this newsletter.

**Please accept my subscription to the
Waiatarua Ratepayers and Residents Association
for 1995**

I enclose: \$7 Household, \$4 Single Occupant

Name

Address

Phone

To Treasurer,

Waiatarua Ratepayers and Residents Association,
911 West Coast Road, Waiatarua

ADVERTISING

This is free to financial members for 1995, January to December. A list of financial members and receipts are available at the library, and any queries about membership can be answered by phoning the Treasurer – Eileen Powell on 814-9298

Anne Wilson J.P. Marriage Celebrant.
Special services. Bush setting for small weddings.
Phone Anne on 814 9547.

For Sale.

Executive cane lounge suite. French Provincial limed cane. 2x2 seater. 1 chair. Pastel cushions. Cost \$5200 3 years ago. Sell \$2000.

Phone Ross or Marilyn on 814 9002.

For Sale.

Computer. 386/25DX, 8mb memory, 300mb disk. High quality 14" screen. CD-ROM, Tape Backup, fax modem. Ideal small office machine. \$2100, with 3 months support.

Phone Tony on 814 9860, fax 814 9140.

My seven year old son and I have recently returned from Europe and have fallen in love with the area. We have been on the Scenic Drive for 6 months and wish to remain when our present lease runs out soon. We need a two or three bedroom house and will take excellent care of it. Max \$250 pw.

Phone Marguerite on 814 9948.

Gallery 807.

Run by Rita and Bob Haase, is open every weekend from late morning till late afternoon, selling fine New Zealand crafts. Gallery 807 is at 807 West Coast Road. Phone 814 9269.